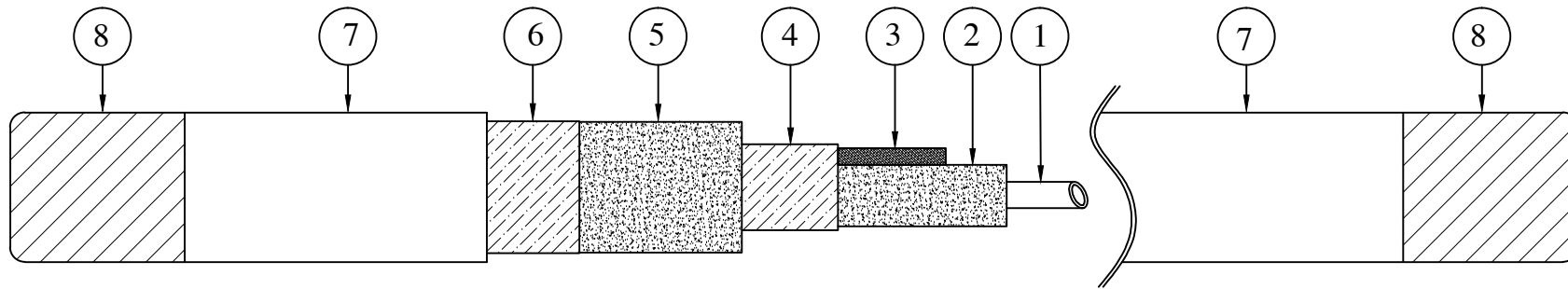


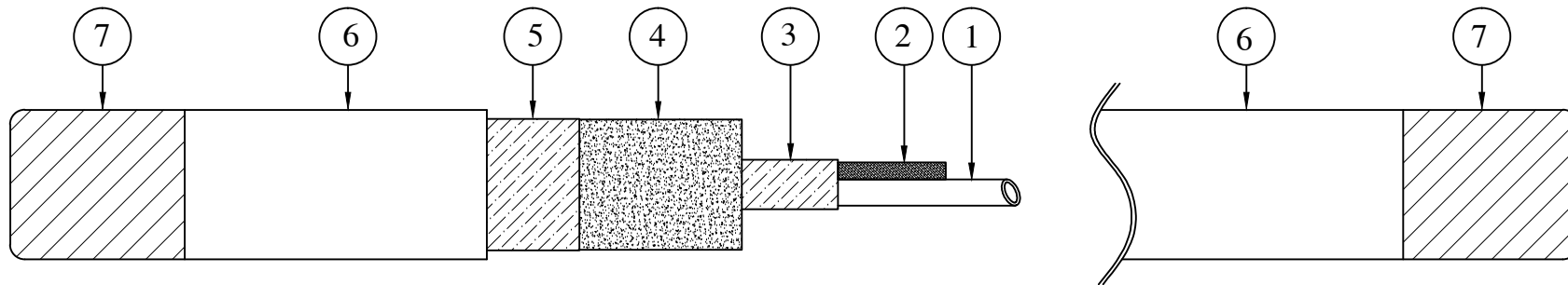
This drawing is the property of Thermopads pvt ltd. Any unauthorised use thereof by copying or otherwise by any party whatsoever is strictly prohibited.

\*IF IN DOUBT, PLEASE ASK\* \*DO NOT SCALE THE DRAWING\* ALL DIMENSIONS ARE IN MM, UNLESS OTHERWISE SPECIFIED \* NUMBER IN TRIANGLE DENOTES REVISION



1. PROCESS TUBE (SINGLE / TWIN)
2. NON-HYGROSCOPIC INSULATION
3. HEAT TRACER
4. HEAT REFLECTIVE AL FOIL
5. NON-HYGROSCOPIC INSULATION
6. PETP TAPE
7. FR PVC OUTER SHEATH.
8. REMOVABLE SILICON RUBBER END CAP

**HOSE CONSTRUCTIONAL VIEW**  
(TRACER SANDWICH DESIGN)



1. PROCESS TUBE (SINGLE / TWIN)
2. HEAT TRACER
3. HEAT REFLECTIVE AL FOIL
4. NON-HYGROSCOPIC INSULATION
5. PETP TAPE
6. FR PVC OUTER SHEATH.
7. REMOVABLE SILICON RUBBER END CAP.

**HOSE CONSTRUCTIONAL VIEW**

00	SATISH.T	SATISH.T	RNR	05.07.23	FOR INFORMATION/PROPOSAL
REV	DRAWN	CHECKED	APPROVED	DATE	DESCRIPTION

CUSTOMER : M/s. SPEC DESIGN, MOSCOW	
Quote Ref :	
TITLE :	SCALE
Construction Details of HEATED HOSE.	NTS

**Thermopads Pvt.Ltd.**  
28,NAGARJUNA HILLS,PANJAGUTTA HYDERABAD-500082(T.S.)

DRG.NO : TPL-HHGA-ENQ-7582      SHT. 1 OF 1